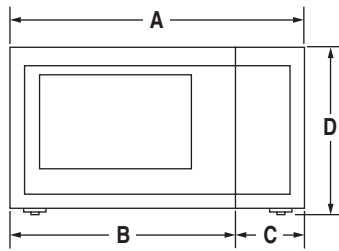


BUILT-IN/COUNTERTOP MICROWAVE OVEN WITH CONVECTION

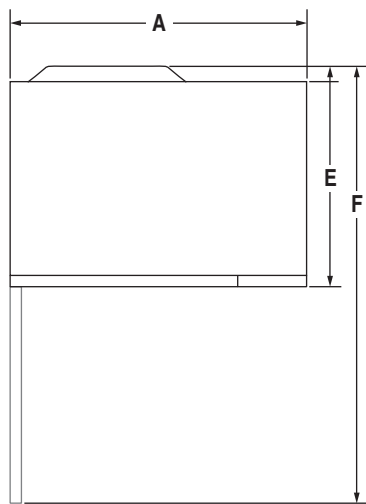
JM C3215BS – 21<sup>3</sup>/<sub>4</sub>" x 12<sup>13</sup>/<sub>16</sub>" x 20<sup>1</sup>/<sub>16</sub>"

PRODUCT DIMENSIONS

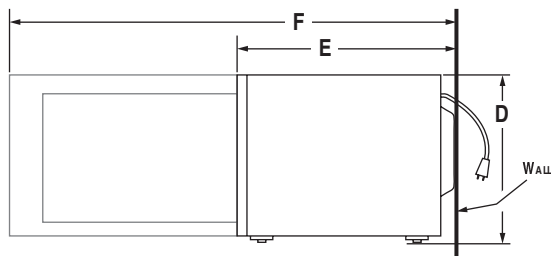


FRONT VIEW

MODEL #		JM C3215BS	
		in	cm
A	Overall width	21 <sup>3</sup> / <sub>4</sub>	55.3
B	Width of door	17 <sup>3</sup> / <sub>4</sub>	45.1
C	Width of control panel	4	10.2
D	Overall height	12 <sup>13</sup> / <sub>16</sub>	32.6
E	Overall depth with door	20 <sup>1</sup> / <sub>16</sub>	51.0
F	Depth with door open 90°	36 <sup>11</sup> / <sub>16</sub>	93.2



TOP VIEW

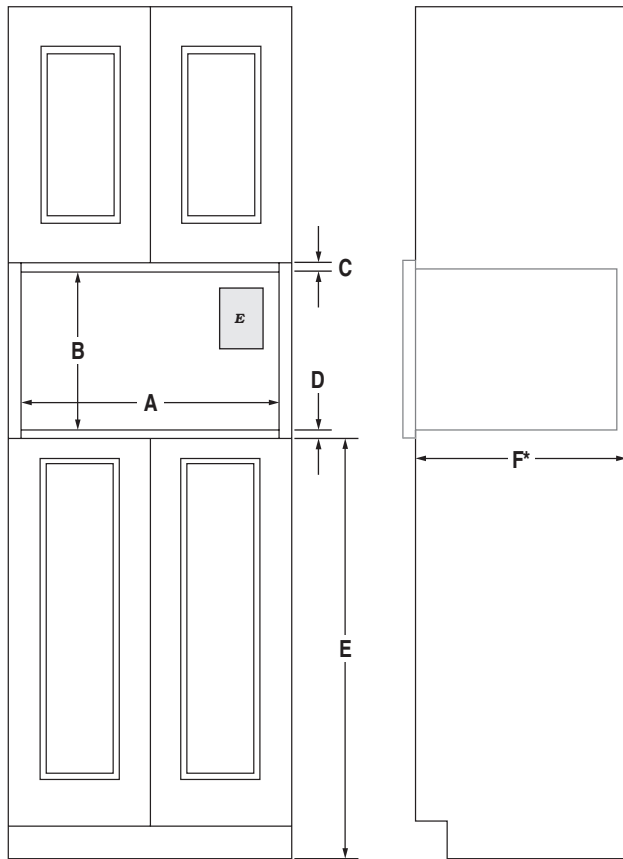


SIDE VIEW

BUILT-IN/COUNTERTOP MICROWAVE OVEN WITH CONVECTION

JM C3215BS – 21<sup>3</sup>/<sub>4</sub>" x 12<sup>13</sup>/<sub>16</sub>" x 20<sup>1</sup>/<sub>16</sub>"

OPENING/CLEARANCE DIMENSIONS



FRONT VIEW

SIDE VIEW

MODEL #		JM C3215BS	
		in	cm
<b>A</b>	Width of cutout	23 <sup>1</sup> / <sub>8</sub>	58.7
<b>B</b>	Height of cutout (min.-max.)	17- 17 <sup>1</sup> / <sub>8</sub>	43.2- 43.5
<b>C</b>	Top of cutout to bottom of upper cabinet (min.)	2	5.1
<b>D</b>	Bottom of cutout to top of single oven (min.)	3	7.6
	Bottom of cutout to top of cabinet door (min.)	1 <sup>9</sup> / <sub>16</sub>	4.0
<b>E</b>	Recommended height from bottom of cutout to floor	36	91.4
<b>F*</b>	Depth of cutout	18- 22 <sup>1</sup> / <sub>2</sub>	45.7- 57.2
<b>E</b>	Recommended electrical connection location		

\* Depth requirements depend upon receptacle and its location within or outside of recommended region. See installation guide for more details.  
NOTE: Trim kit frame extends 1<sup>1</sup>/<sub>8</sub>" (2.7 cm) above and below the cutout opening.

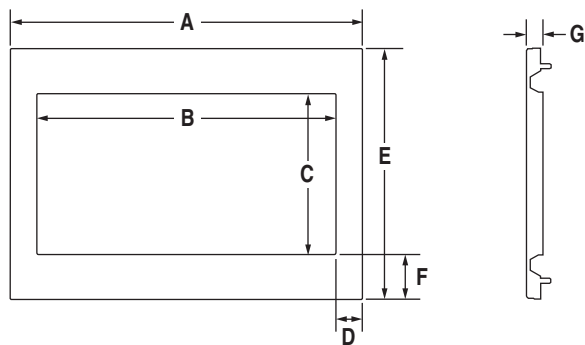
**ELECTRICAL REQUIREMENTS**

120 volt, 60 Hz, AC only, 15- or 20-amp fused, electrical supply is required. A time-delay fuse or dedicated circuit is recommended. Minimum length of power cord is 30" (76.2 cm). Do not use an extension cord.

**VENTING REQUIREMENTS**

If microwave oven is built in, a trim kit is required for proper ventilation.

TRIM KIT DIMENSIONS



	M KC2150AS		M KC2157AS		
	in	cm	in	cm	
<b>A</b>	Overall width	29 <sup>3</sup> / <sub>4</sub>	75.6	26 <sup>7</sup> / <sub>8</sub>	68.2
<b>B</b>	Width of opening	22 <sup>3</sup> / <sub>4</sub>	57.8	22 <sup>3</sup> / <sub>4</sub>	57.8
<b>C</b>	Height of opening	12 <sup>1</sup> / <sub>4</sub>	31.1	12 <sup>1</sup> / <sub>4</sub>	31.1
<b>D</b>	Width of frame	3 <sup>1</sup> / <sub>2</sub>	8.9	2 <sup>1</sup> / <sub>16</sub>	5.2
<b>E</b>	Overall height	19 <sup>1</sup> / <sub>8</sub>	48.6	19 <sup>1</sup> / <sub>8</sub>	48.6
<b>F</b>	Height of frame	3 <sup>7</sup> / <sub>16</sub>	8.7	3 <sup>7</sup> / <sub>16</sub>	8.7
<b>G</b>	Depth of frame	1 <sup>3</sup> / <sub>16</sub>	3.0	1 <sup>3</sup> / <sub>16</sub>	3.0